

PRODUCT INFORMATION BULLETIN

Type: Natural Crystalline Flake Graphite

Grade:

Run-of-Plant Concentrate Purity Grade

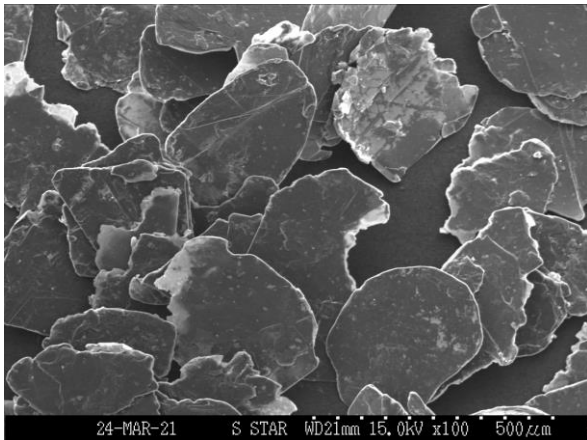
Packaging and Other Information:

- 1) 3-ply paper bags, 20 kg
- 2) 2,205 Lbs. Bulk bags, truckload
- 3) 50 EA 20 kg bags on a pallet

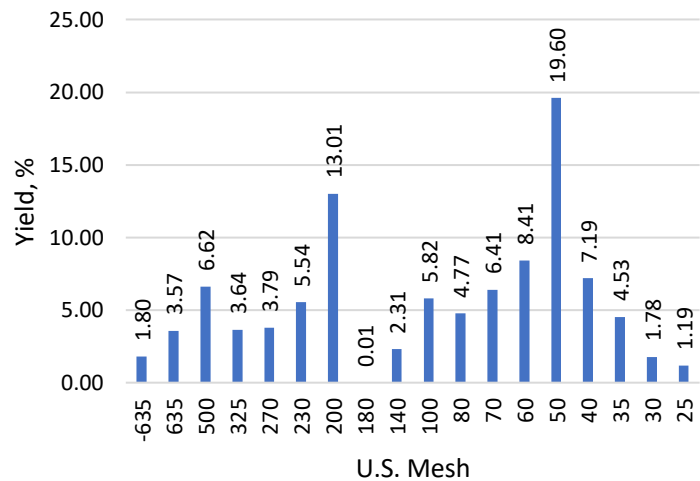
Measured Characteristics:

Loss on Ignition, wt.%C	95.33
Ash, %	4.67
Moisture Content, %	0.07
Scott Volume, g/cm³	0.25
Tap Density, g/cm³	0.53
BET Surface Area, m²/g	3.83

Product Appearance:



Particle Size Distribution:



Elemental Analysis (ICP):

Element	Content	Element	Content	Element	Content
As	0.50 ppm	Pb	2.50 ppm	Mn	22.0 ppm
Sn	0.10 ppm	Cd	0.50 ppm	Cr	9.90 ppm
Mo	0.82 ppm	Co	0.34 ppm	V	11.0 ppm
Sb	0.40 ppm	Ni	2.70 ppm	Cu	14.0 ppm
Si	2%	Fe	1%	Ca	49.0 ppm
Zn	17.0 ppm	B	1.80 ppm	Al	1%

- Approx. 1.2 wt.% +25 Mesh;
- As much as 3 wt.% +30 Mesh;
- As much as 31 wt.% +50 Mesh;
- Nearly 20 wt.% +80 Mesh;
- Approx. 5.82 wt.% +100 Mesh;
- Just over 40 wt.% -100 Mesh.

Contact Information:

Rua Barão de Trinufo, 612 – Cj 2210

Brooklin Paulista, São Paulo, SP – Brasil

CEP 04.602-002

Email: a.assis@southstarbatterymetals.com

www.southstarbatterymetals.com

Note: These are not product specifications. Information provided in this Product Information Bulletin is supplied to indicate the approximate physical and chemical properties of the material. Customers are strongly urged to test the material independently prior to application/purchase.

PRODUCT INFORMATION BULLETIN

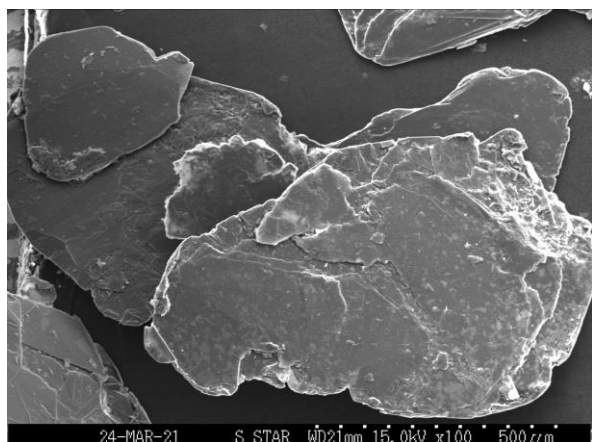
Type: Natural Crystalline Flake Graphite

Grade: Concentrate Grade +50 Mesh Flake

Packaging and Other Information:

- 1) 3-ply paper bags, 20 kg
- 2) 2,205 Lbs. Bulk bags, truckload
- 3) 50 EA 20 kg bags on a pallet

Product Appearance:



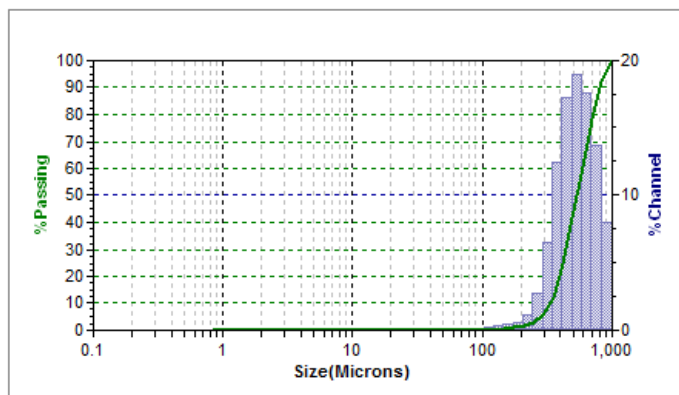
Screen Size Distribution:

Sieve size distribution of this product meets ASTM E-11 standard specifications: the flake size is comprised of no greater than 20 wt.% above +30 US mesh and 20 wt.% below +50 US mesh.

Measured Characteristics:

Loss on Ignition, wt.%C	95.33
Ash, %	4.67
Moisture Content, %	0.07
Scott Volume, g/cm ³	0.40
Tap Density, g/cm ³	0.57
BET Surface Area, m ² /g	3.0

Particle Size Distribution:



Laser diffraction particle size analysis by Microtrac S3500

10% Less Than (µm)	338.0
50% Less Than (µm)	537.1
90% Less Than (µm)	812.9
Mean Value (µm)	554.8

Contact Information:

Rua Barão de Trinufo, 612 – Cj 2210
Brooklin Paulista, São Paulo, SP – Brasil
CEP 04.602-002

Email: a.assis@southstarbatterymetals.com
www.southstarbatterymetals.com

PRODUCT INFORMATION BULLETIN

Type: Natural Crystalline Flake Graphite

Grade: Concentrate Grade +80 Mesh Flake

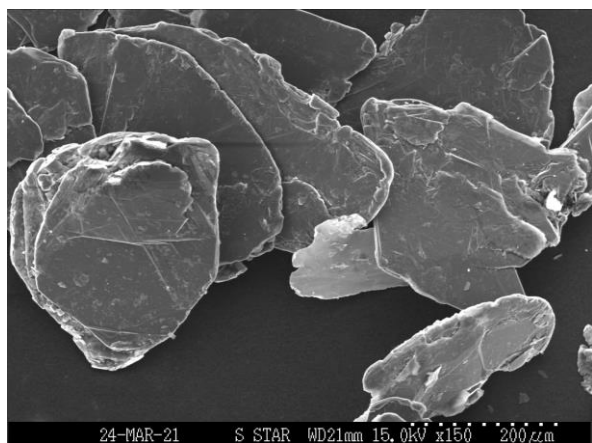
Packaging and Other Information:

- 1) 3-ply paper bags, 20 kg
- 2) 2,205 Lbs. Bulk bags, truckload
- 3) 50 EA 20 kg bags on a pallet

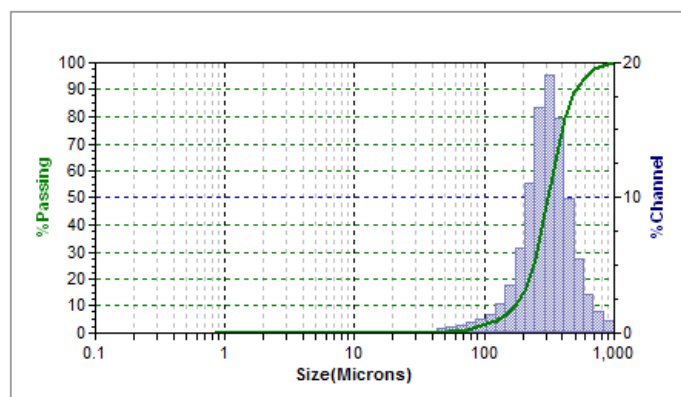
Measured Characteristics:

Loss on Ignition, wt.%C	95.33
Ash, %	4.67
Moisture Content, %	0.07
Scott Volume, g/cm³	0.34
Tap Density, g/cm³	0.50
BET Surface Area, m²/g	3.5

Product Appearance:



Particle Size Distribution:



Screen Size Distribution:

Sieve size distribution of this product meets ASTM E-11 standard specifications: the flake size is comprised of no greater than 20 wt.% above +50 US mesh and 20 wt.% below +80 US mesh.

Laser diffraction particle size analysis by Microtrac S3500

10% Less Than (µm)	174.5
50% Less Than (µm)	311.7
90% Less Than (µm)	509.1
Mean Value (µm)	331.6

Contact Information:

Rua Barão de Trinufo, 612 – Cj 2210
Brooklin Paulista, São Paulo, SP – Brasil
CEP 04.602-002

Email: a.assis@southstarbatterymetals.com
www.southstarbatterymetals.com

Note: These are not product specifications. Information provided in this Product Information Bulletin is supplied to indicate the approximate physical and chemical properties of the material. Customers are strongly urged to test the material independently prior to application/purchase.

PRODUCT INFORMATION BULLETIN

Type: Natural Crystalline Flake Graphite

Grade: Concentrate Grade -100 Mesh Flake

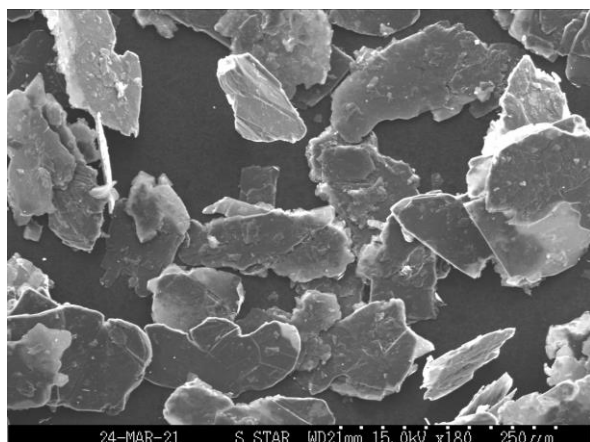
Packaging and Other Information:

- 1) 3-ply paper bags, 20 kg
- 2) 2,205 Lbs. Bulk bags, truckload
- 3) 50 EA 20 kg bags on a pallet

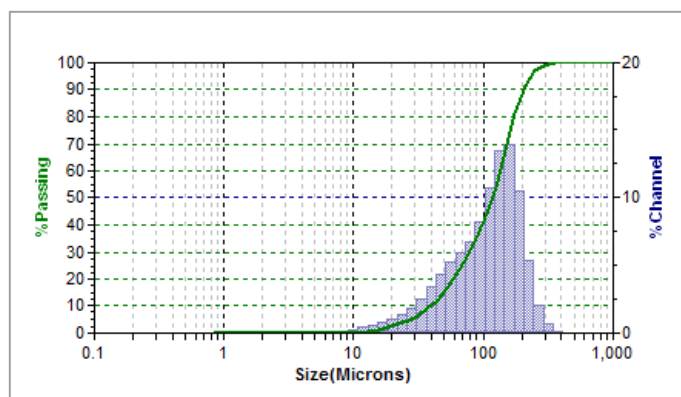
Measured Characteristics:

Loss on Ignition, wt.%C	96.17
Ash, %	3.83
Moisture Content, %	0.16
Scott Volume, g/cm³	0.21
Tap Density, g/cm³	2.53
BET Surface Area, m²/g	4.18

Product Appearance:



Particle Size Distribution:



Laser diffraction particle size analysis by Microtrac S3500

Screen Size Distribution:

Sieve size distribution of this product meets ASTM E-11 standard specifications: the flake size is comprised of no greater than 20 wt.% above +80 US mesh and 20 wt.% below 100 US mesh.

10% Less Than (µm)	39.38
50% Less Than (µm)	117.80
90% Less Than (µm)	202.60
Mean Value (µm)	120.10

Contact Information:

Rua Barão de Trinufo, 612 – Cj 2210
Brooklin Paulista, São Paulo, SP – Brasil
CEP 04.602-002

Email: a.assis@southstarbatterymetals.com
www.southstarbatterymetals.com